



Thermo Scientific
TriPlus RSH Autosampler
Integrated Sampling System

you are productive
solving your
chromatography challenges

Thermo
SCIENTIFIC

a step ahead

in automated sampling

The quality of gas chromatography results depends on many factors – the stability of the gas chromatograph, the ruggedness and sensitivity of the detector, and the skill of the chemist in executing the proper sample workflow. Within this process, sample preparation and introduction provide the foundation for repeatability and reliability that are essential for quality data.

The Thermo Scientific TriPlus RSH autosampler utilizes robotic sample handling to expand automated capabilities beyond liquid, headspace and solid-phase microextraction (SPME) injections to advanced sample handling cycles. Your results benefit from improved precision and reproducibility, while your laboratory gains unique advantages from the system's unattended operations and sample handling flexibility.

Exceptional Precision

- Reproducible performance
- Automate basic sample and standards preparation
- Accuracy you can count on

Unmatched Flexibility

- Scalable capabilities to expand GC and GC-MS application range
- Accurate micro-sample injections
- Match techniques to sample types

Ultimate Productivity

- Large sample capacities
- Designed for full unattended 24/7 operation
- Rugged tireless operations



expand productivity

and sample handling with
unique and powerful capabilities

Experience seamless operation with the innovative automatic syringe exchanger

In the modern laboratory, basic sample handling tasks, including standard or stock sample dilutions, internal standard addition and derivatization, require manual pipetting of precise amounts of products before any dilution or chemical reaction occurs. To accurately automate all of these steps, the TriPlus RSH™ autosampler offers a new and innovative ATC (Automatic Tool Change) capability.

The ATC feature enables the user to set up a sequence using up to six different syringes, automatically loaded by the autosampler to accurately perform dilutions, calibrations, and sample injections. The ability to exchange syringes for different tasks enables high precision sample-handling in a single, unattended sequence prior to automated sample injection.

Developed for increased analytical flexibility and lab productivity, this unique capability automates complex sample preparation and injection workflows, thus eliminating human error. Combination of these features within one single unit, integrated on GC and GC-MS systems, saves precious lab space.

Expand unattended operations and productivity with unprecedented sample capacity

Unequivocal lab throughput is attainable by using the largest sample capacity available for an autosampler. A maximum of 648, 2 mL vials combined with multiple 100 mL wash/waste bottles, on the TriPlus RSH autosampler, enable week-end long unattended operations – a goal not attainable with most other sampling systems currently on the market.

Sequences can be developed in which one autosampler serves multiple GC systems, further expanding lab productivity. This feature enables the powerful combination of screening on a single GC or GC-MS system while simultaneously performing positive confirmation/quantitation on another GC-MS or GC-MS/MS system.

Further productivity is achieved by utilizing various injection modes that match techniques to sample types. Liquid, Headspace and SPME injections can all be used within a single sequence, running unattended with the use of the ATC capability, switching the syringe tool automatically as needed.



TriPlus RSH automatic
tool change capability



5 microliters of
a liquid sample in
a 300 microliter vial



Accurate micro-sample
injections

1 μL splitless injection	40 ppm C20 in toluene
Volume in vial (microliters)	Peak area
50	81244277
40	80268993
30	82088809
20	82095395
10	84436788
5	84312030
RSD%	2.0

The TriPlus RSH autosampler provides excellent repeatability with micro-samples, down to 5 μL in a vial, particularly interesting for trace analysis, radioactive samples, or samples requiring expensive internal standards.

achieve the best results

for your sample type

The TriPlus RSH robotic sample handling system offers liquid, headspace, and solid phase microextraction – capabilities you expect as being a standard part of a multi-axis autosampler. In these modes, the TriPlus RSH autosampler delivers the precision you demand for achieving exceptional results.

Flexible liquid sampling and injection

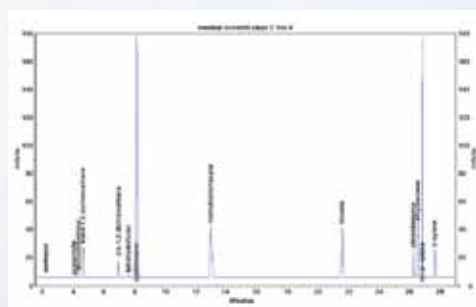
The TriPlus RSH autosampler offers optimized liquid injection modes to support a wide range of sample types, inlets, and techniques for syringe filling. Parameters like pull-up strokes, viscosity delay, washing cycles, and needle depths can all be programmed, thus achieving high precision sampling. Additionally, samples can be withdrawn into the syringe using one of the following methods:

- **Regular Mode** draws the sample plug into the syringe barrel for controlled injections.
- **Sandwich Technique** utilizes an additional solvent, standard, or second sample, and provides the optimum sampling conditions even for the most critical samples.

In addition to standard split/splitless injection modes, PTV and cold on-column methods are fully optimized to guarantee the highest quality results. Depending on the sample type, a new fast cold needle injection with cycle times lower than 100 ms is also available.

Simple and reliable headspace injection

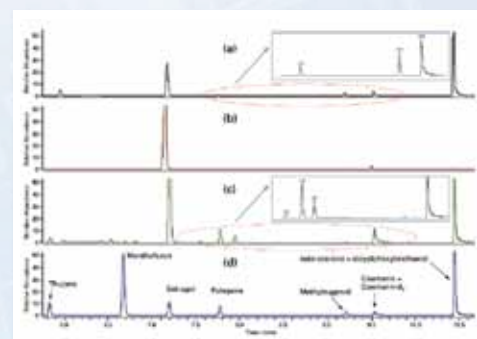
Static headspace is a straight forward method for volatile analysis. Eliminating the need for a transfer line and/or sample loop, the TriPlus RSH autosampler uses a high temperature resistant gas-tight syringe for direct headspace injection. Overlapping sample incubation capability offers higher productivity. Every sample is ready for injection based on the GC cycle time. The optional Multiple Headspace Extraction (MHE) mode enables accurate quantification of volatiles in a solid or samples with interfering matrices.



USP <467> chromatogram – Residual solvents Class II – mix A by headspace

Solvent-free sample preparation with SPME

The TriPlus RSH autosampler automates SPME sample preparation. Optimum performance is achieved through precise control of all steps, from fiber preconditioning, to adsorption and desorption. Samples can be heated and shaken to reduce analysis times. Compounds of interest are extracted from liquid or headspace phases by simply setting the depth of needle penetration into the vials. A great productivity boost is delivered by the fiber conditioning station, which flushes and heats fibers after the injection.



MRM chromatograms – (a) Herbal liqueur containing estragole, pulegone and methyl eugenol; (b) Pesto sauce containing estragole and methyl eugenol; (c) Herbal tea containing thujone, menthofuran, estragole, pulegone, methyl eugenol and coumarin; (d) mixture of seven flavoring standards and two internal standards.

	C12	C14	C16	C18	C20	C22	C24	C26	C28	C30	C32	C34	C36	C38	C40
inj 1	5790321	6454839	6514738	6381364	6422953	6341637	6250327	5902151	6115568	5938289	5840239	5608114	5666615	5489799	5336295
inj 2	5807141	6476970	6526454	6394970	6440861	6355375	6251328	5922265	6140268	5947775	5863126	5634042	5690967	5516798	5358942
inj 3	5827629	6497997	6554058	6420246	6459733	6379194	6286949	5954194	6145555	5984266	5901069	5682593	5730988	5550751	5378550
inj 4	5792134	6441515	6492578	6363032	6404787	6327450	6252542	5921469	6097604	5949291	5845351	5611117	5664331	5491697	5332499
inj 5	5800582	6468230	6522911	6392049	6433275	6360887	6263864	5952981	6092459	5979322	5865658	5637562	5688183	5520119	5357380
inj 6	5768772	6464892	6517503	6387861	6432945	6351598	6268676	5935155	6142234	5972692	5863080	5635080	5687770	5517832	5353762
inj 7	5823193	6476187	6531049	6398825	6441941	6367204	6265981	5949279	6145821	5989443	5898354	5662424	5717530	5538684	5370648
inj 8	5790579	6440709	6489338	6363591	6403511	6328596	6240425	5928660	6095460	5966984	5871535	5627761	5679370	5503010	5335919
inj 9	5802600	6458242	6512554	6377256	6423417	6349368	6249385	5941603	6090166	5964591	5871728	5643593	5696094	5517580	5350256
inj 10	5862631	6469692	6520845	6388855	6435882	6366909	6264664	5947004	6141475	5998001	5900393	5657099	5709141	5527381	5358868
mean	5806558	6464927	6518203	6386805	6429931	6352822	6259414	5935476	6120661	5969065	5872053	5639939	5693099	5517365	5353312
sd	25973	17257	18505	16955	17091	16804	13295	16818	24616	19487	21765	22825	21274	19156	15098
RSD%	0.4	0.3	0.3	0.3	0.3	0.3	0.2	0.3	0.4	0.3	0.4	0.4	0.4	0.3	0.3

Peak area repeatability of a splitless injection of a “Florida Mix” standard

increased automation

and error-free sample handling

Move beyond automated sample injections to more advanced tasks, such as sample preparation, dilutions, standard curve generation, and derivatization routines by taking advantage of the newest technology in sample handling systems.

Sequential Dilution

A high concentration standard is automatically diluted to easily meet your requirements.



Sequential dilution

Calibration Dilution

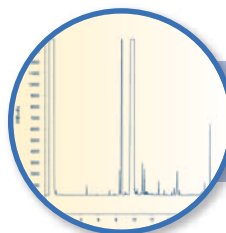
Reliability and precision for your quantitative calibration. Prepare your calibration points with or without internal standards.



Calibration dilution with internal standard

Standard Addition

Add precise amounts of standards to any vial. Calibrating by standard addition is commonly used in headspace and SPME analyses. The accurate addition of standards is now a reliable, automated step in the measurement cycle.



Unknown biodiesel analysis with automated derivatization and internal standard addition

Derivatization

Precise volumes, internal standard and reagent additions, with programmed incubation times – an all in one automated procedure that occurs just prior to injection.



Incubator for mixing and derivatization

Mixing

Vials undergo automatic agitation after the addition of standard volumes. You can also speed-up headspace and SPME applications to reach the equilibrium faster.



Vortexer utilizing different vial sizes

Vortexing

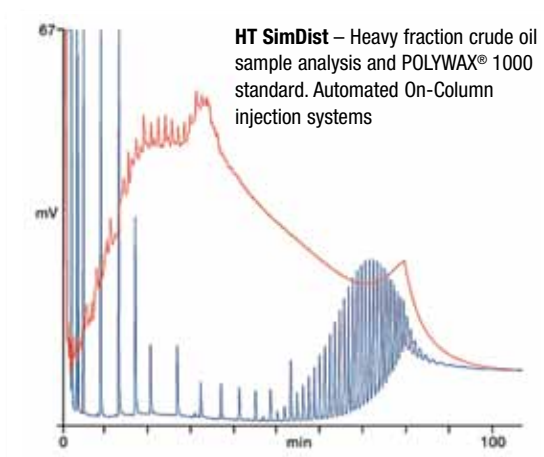
Physical vortexing for thorough mixing can be used for liquids homogenization and extraction steps with solvents.

powerful options

to expand applications,
preserve sample integrity
and enable sample traceability

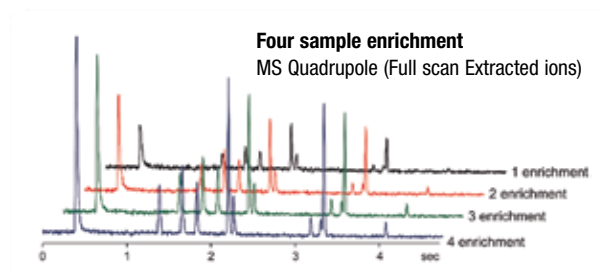
Expand applicability to include unstable compounds or viscous samples

Temperature-controlled tray options protecting sensitive samples can be incorporated into the TriPlus RSH autosampler quickly at any time. An affordable solution for large 10/20 mL vials can control temperatures from 4 °C up to 70 °C with an external thermostatic bath. Alternatively, a temperature-controlled option can accommodate a wide range of vial types, providing stable temperature control for accurate sampling of very volatile solvents, unstable compounds, or extremely viscous samples.



Enhanced sensitivity for headspace analysis

Sample enrichment is a valuable tool for the analysis of trace levels of volatile organics in difficult matrices with the use of headspace injections. Combining the TriPlus RSH autosampler capability of handling multiple sequential headspace injections with a cryogenic GC option, sensitivity is greatly enhanced as a larger sample volume can be efficiently analyzed. This capability is ideal for the simplification of demanding environmental analyses.



5 mL of 500 ppt water solution of Halogenated Volatiles Mix 551A



Utilize barcode reading for enhanced sample traceability

The convenient dual-laser barcode reader is capable of reading vertical 1-D barcode labels on 2, 10 and 20 mL vials. The dual-scanner capability allows the TriPlus RSH autosampler to read vial barcodes, regardless of their position in the vial, making it easier to build sequences and ensure complete sample traceability.

a fully validated laboratory solution

making you productive
from day one

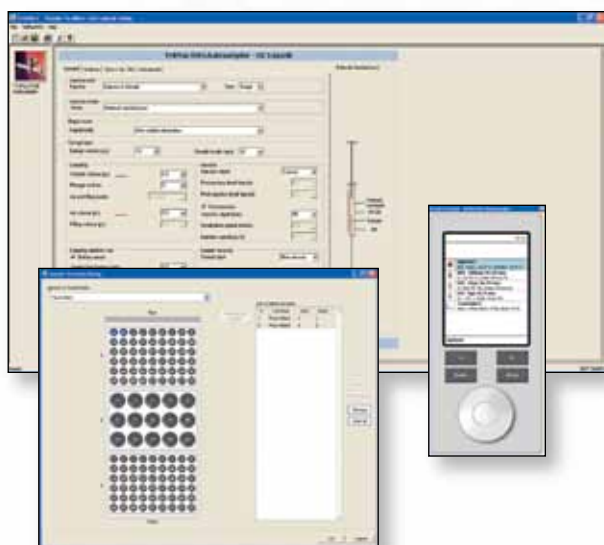
Validated consumables for trusted results

A complete selection of Thermo Scientific consumables complements our innovative range of GC and GC-MS systems. They include micro vials, vials for liquid and headspace, magnetic and plastic caps, snap-on, screw- and crimp-top caps, a wide choice of liquid and gas-tight syringes, well plates, trays and much more.

All of these consumables are designed and tested to work problem-free with the TriPlus RSH autosampler.



All types of syringes, vials, and caps offered to accommodate the largest choice of application requirements



Graphic-assisted flexible instrument programmability for easy start-up and workflow operations.

Integrated software control for quick setup and intuitive sample workflow

The TriPlus RSH instrument control – from installation and setup to the most complex sequence – is fully embedded on standard Thermo Scientific Chromatography Data Systems (CDS.) GC-MS operations run smoothly with integrated TriPlus RSH autosampler controls on Thermo Scientific Xcalibur software.

Three basic setup screens (available on all Thermo Scientific software platforms), easily guide the setting of TriPlus RSH parameters for Liquid, Headspace and SPME methods. Despite the large number of configurations and options offered within the basic injection modes, instrument setup and methods are created quickly with just a few mouse clicks. Sample preparation cycles are available as add-ons through pre-compiled sequences with application descriptions.

Methods and sequences can be developed and run locally or remotely through the use of a convenient network card. A virtual terminal, fully integrated within the same software control, completely mimics the physical handheld controller and enables easier installation and initial setup.

Convenient handheld option for local control

The handheld controller is the ideal solution for displaying instrument status and facilitating setup and maintenance. Laboratories equipped with multiple TriPlus RSH autosamplers will also benefit from the operational flexibility provided by this controlling tool, using a single handheld device to set up all TriPlus RSH autosamplers in the lab.



Thermo Scientific solutions

for your gas chromatography needs



Thermo Scientific FOCUS GC

The FOCUS™ GC is a compact, single-channel gas chromatograph designed for use in routine quality control laboratories and is available with either FID or TCD.



Thermo Scientific TRACE GC Ultra Gas Chromatographs

The TRACE™ GC Ultra multi-channel gas chromatograph is developed for the evolving requirements of modern laboratories. With the most complete range of proprietary inlets, sensitive detection systems, smart accessories, and ancillary devices, the Ultra platform features unique technologies that raise the standards of speed, sensitivity and separation in gas chromatography.



Thermo Scientific ISQ Single Quadrupole GC-MS

The ISQ™ system offers rugged and reliable performance and nonstop productivity. The ISQ GC-MS features a new source design ideal for continuous high-throughput operation. The vacuum interlock enables source removal without venting the system, for unstopable productivity.



Thermo Scientific ITQ Series GC-Ion Trap MS

ITQ™ Series GC-Ion Trap MS offers outstanding full-scan electron ionization sensitivity and upgradeability. From a small-footprint entry-level QA/QC instrument to a fully-featured, research-grade system with advanced MSⁿ functionality, the ITQ Series GC-MS system offers a broad range of standard features along with an impressive list of options.



Thermo Scientific TSQ Quantum XLS Ultra Triple Quadrupole GC-MS/MS

The TSQ™ Quantum XLS Ultra is the new “Gold Standard” in GC-MS/MS. Thermo Scientific HyperQuad technology delivers highly increased mass resolving quadrupoles for ultra selective SRM, with best in class sensitivity, and allows unsurpassed analytical performance for the most difficult matrix challenges.

Resources for Chromatographers

Thermo Scientific Chromatography Columns and Consumables Catalog

This extensive catalog offers 540 pages of proven chromatography tools and product selection guides. Available online, with a robust search tool and optimized for your Apple® iPad®. Visit www.thermoscientific.com/catalog



Chromatography Resource Center

Our web-based resource center provides technical support, applications, technical tips and literature to help move your separations forward. Visit

www.thermoscientific.com/chromatography



www.thermoscientific.com/triplusrsh

©2011 Thermo Fisher Scientific Inc. All rights reserved. Solid Phase Microextraction (SPME) Technology is licensed exclusively to Supelco Inc. Apple and iPad are registered trademarks of Apple Inc., registered in the U.S. and other countries. ISO is the registered trademark of the International Standards Organization. Windows is a registered trademark of Microsoft Corporation. POLYWAX is a registered trademark of Baker Hughes Incorporated. All other trademarks are the property of Thermo Fisher Scientific Inc. and its subsidiaries. Specifications, terms and pricing are subject to change. Not all products are available in all countries. Please consult your local sales representative for details.

COMPANY WITH QUALITY MANAGEMENT
SYSTEM CERTIFIED BY DNV
= ISO 9001:2008 =
Thermo Fisher Scientific S.p.A.
Milan, Italy is ISO Certified.

Africa-Other +27 11 570 1840
Australia +61 3 9757 4300
Austria +43 1 333 50 34 0
Belgium +32 53 73 42 41
Canada +1 800 530 8447
China +86 10 8419 3588
Denmark +45 70 23 62 60

Europe-Other +43 1 333 50 34 0
Finland/Norway/Sweden
+46 8 556 468 00
France +33 1 60 92 48 00
Germany +49 6103 408 1014
India +91 22 6742 9434
Italy +39 02 950 591

Japan +81 45 453 9100
Latin America +1 561 688 8700
Middle East +43 1 333 50 34 0
Netherlands +31 76 579 55 55
New Zealand +64 9 980 6700
Russia/CIS +43 1 333 50 34 0
South Africa +27 11 570 1840

Spain +34 914 845 965
Switzerland +41 61 716 77 00
UK +44 1442 233555
USA +1 800 532 4752

BR52235_E 08/11M

Thermo
SCIENTIFIC

Part of Thermo Fisher Scientific