

**Thermo Scientific**  
SMART Digest Kit Technical Guide

Facilitating  
**perfect digestion**

**Thermo**  
SCIENTIFIC

# SMART Digest delivers simple, robust, reproducible and fast digestion of proteins

The Thermo Scientific™ SMART Digest™ kits are designed for biopharmaceutical and proteomic applications that require highly reproducible, sensitive and fast analyses, often in high throughput workflows. They achieve this due to the optimized heat stable immobilized trypsin design.

## Challenges for biopharmaceutical and protein research laboratories

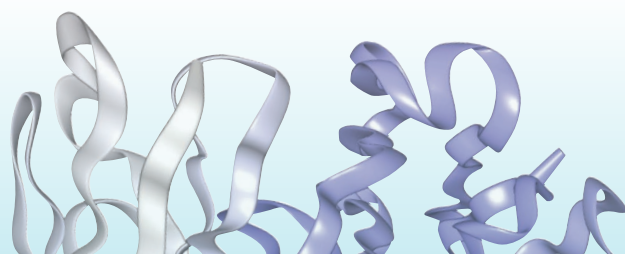
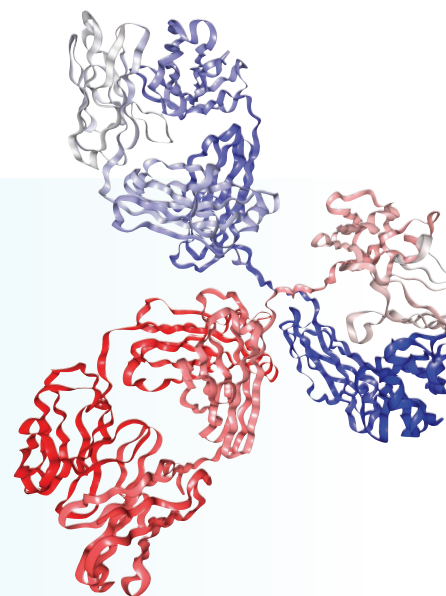
The modern biopharmaceutical and protein research laboratory is tasked with providing high quality analytical results, often in high-throughput, regulated environments. One of the key areas which affects these requirements is sample preparation. Current technologies employed are subject to high levels of irreproducibility, poor sensitivity, and protracted methodologies that are not amenable to automation and often require 24 hours to achieve full digestion.

In order to meet the industry demands, analytical workflows need to provide:

- High reproducibility
- High sensitivity
- High levels of data quality
- Compatibility with automation

**The SMART Digest kit is simple to implement and satisfies the analytical workflow demands. It offers significant benefits over existing conventional in-solution digestion protocols.**

- Significantly faster than in-solution digestion
- 3-step sample preparation protocol
- Higher throughput
- Ability to automate
- More reproducible than in-solution digestion
- Higher sensitivity



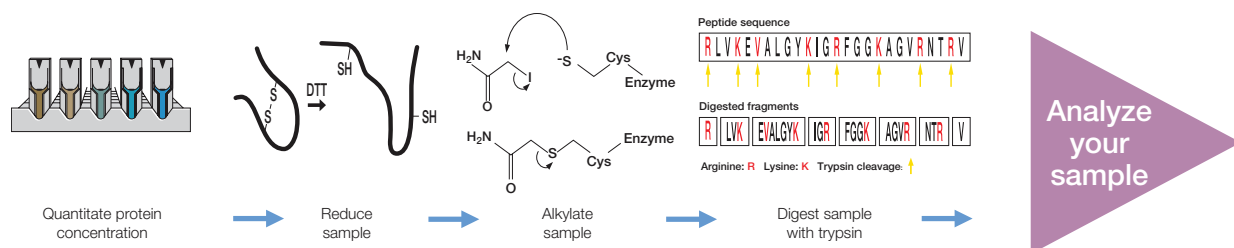
# Increased workflow efficiency and simplicity of use with the SMART Digest Kit

It provides a simple to implement sample preparation process, which not only mitigates against errors, but also significantly reduces sample preparation time.

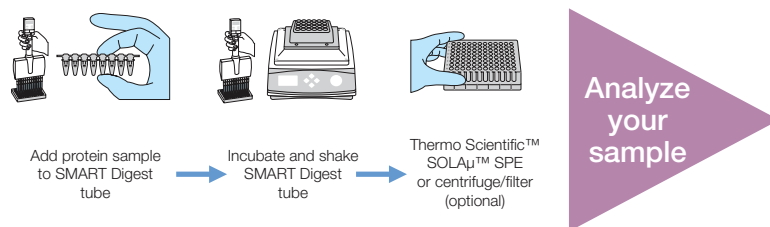
Current sample preparation protocols for the digestion of proteins are multifaceted and laborious. Without a single source solution, errors are far more likely to occur. Therefore, the overall protocol is subject to irreproducibility and significant sample processing time.

The SMART Digest kit overcomes these barriers by providing a 3-step, simple to implement, integrated process (see the diagram below), which provides high data confidence and significantly increased reproducibility. The entire protocol can be easily automated for high throughput processing.

## Standard Digest

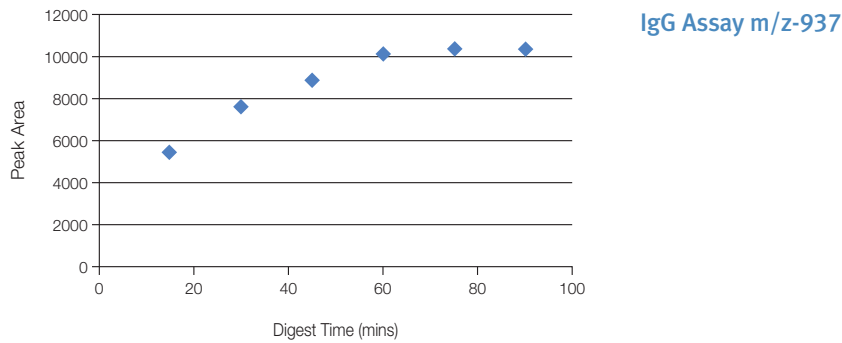


## SMART Digest



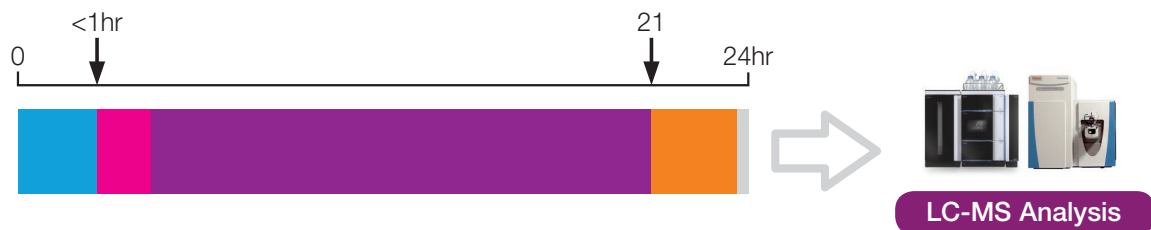
## Full digestion is achieved in 60 minutes

The SMART Digest process is not only simple, but significantly reduces the time from sample preparation to analysis. Typically it takes less than 60 minutes, dependant on sample complexity, to achieve full digestion as can be seen in the IgG example below.



## SMART Digest vs conventional in-solution digest protocol

### In-solution digest



### SMART Digest



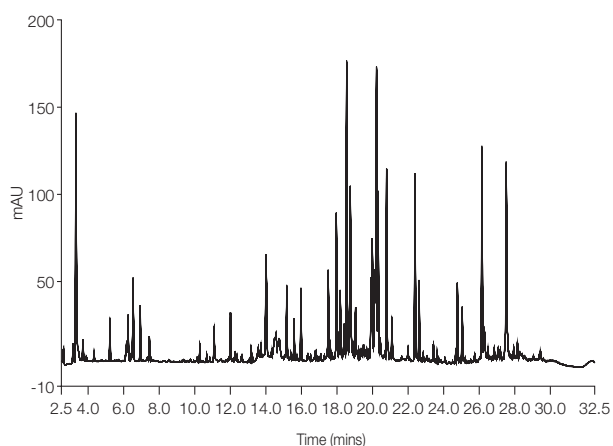
- Sample preparation
- Digestion
- Spin down
- Protein assay
- SPE + dry/reconstitute



# Reproducibility

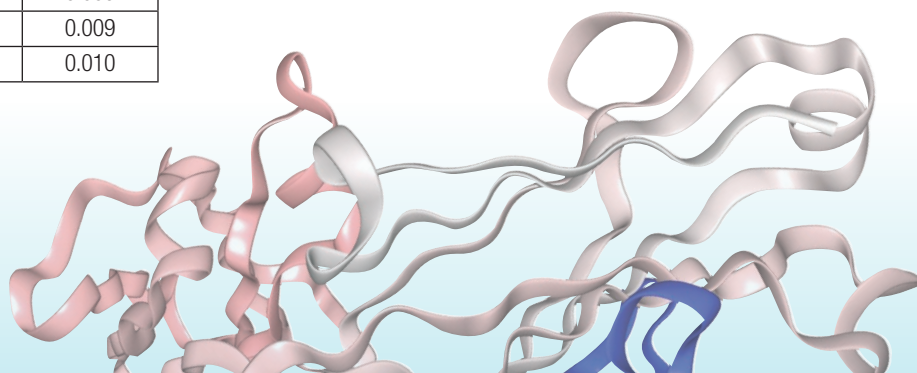
The SMART Digest kit provides significant improvements in reproducibility over existing protocols, which results in fewer sample failures, higher throughput and the ability to more easily interrogate data.

The following chromatogram shows 13 overlaid traces of mouse mAb peptides, extracted from human plasma and processed with the SMART Digest kit. Excellent reproducibility of <0.082 %RSD is achieved, as indicated in the table below.



<b>Instrumentation:</b>	Thermo Scientific™ Vanquish™ UHPLC System	
<b>Column:</b>	<b>Thermo Scientific™ Acclaim™ RSLC 120, C18, 2.2 μm Analytical (2.1 × 250 mm) (P/N 074812)</b>	
<b>Mobile phase A:</b>	0.05% TFA in water	
<b>Mobile phase B:</b>	0.04% TFA in 8/2 acetonitrile/water (v/v)	
<b>LC Gradient:</b>	Time (min)	%A %B
	0.0	96 4
	30	50 50
	31	10 90
	35	10 90
	36	96 4
	45	96 4
<b>Flow Rate:</b>	0.40 mL/min	
<b>Inj. Volume:</b>	5 μL	
<b>Temp.:</b>	80 °C	
<b>Detection:</b>	214 nm, data collection rate 20 Hz, Response Time 0.2 sec	
<b>Data Processing:</b>	Thermo Scientific™ Dionex™ Chromleon™ 7.2 Chromatography Data System	

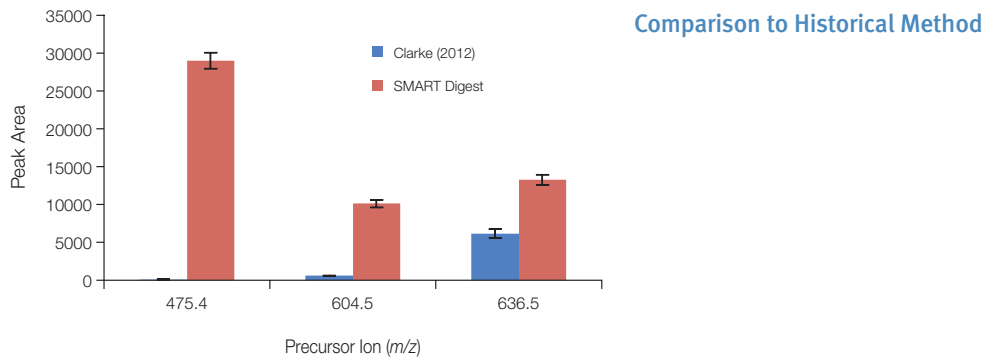
Peak #	RT (min)	RT-RSD (%)
3	3.315	0.082
9	5.231	0.065
14	6.532	0.017
15	6.937	0.023
19	10.290	0.021
23	12.013	0.012
31	14.011	0.013
39	15.177	0.012
42	15.589	0.010
51	17.511	0.007
55	17.969	0.011
61	18.546	0.010
83	20.798	0.010
85	21.095	0.012
87	22.386	0.009
96	24.774	0.012
103	26.155	0.009
106	26.155	0.009
109	27.529	0.010



## Sensitivity/Data Quality

The SMART Digest kit provides higher sequence coverage due to the removal of the reduction and alkylation steps and absence of trypsin. This reduces the number of chemicals and presence of trypsin in the final sample, as well as reducing post translational modifications, resulting in lower suppression of signal during LC-MS analysis.

The mass spectrometry (MS) peak area response comparison below shows how the thyroglobulin from human plasma, digested using the SMART Digest kit, provides higher levels of sensitivity compared to a standard in-solution digest\*. In addition to this the SMART Digest protocol took 3.5 hours compared to 20 hours for the in-solution protocol.



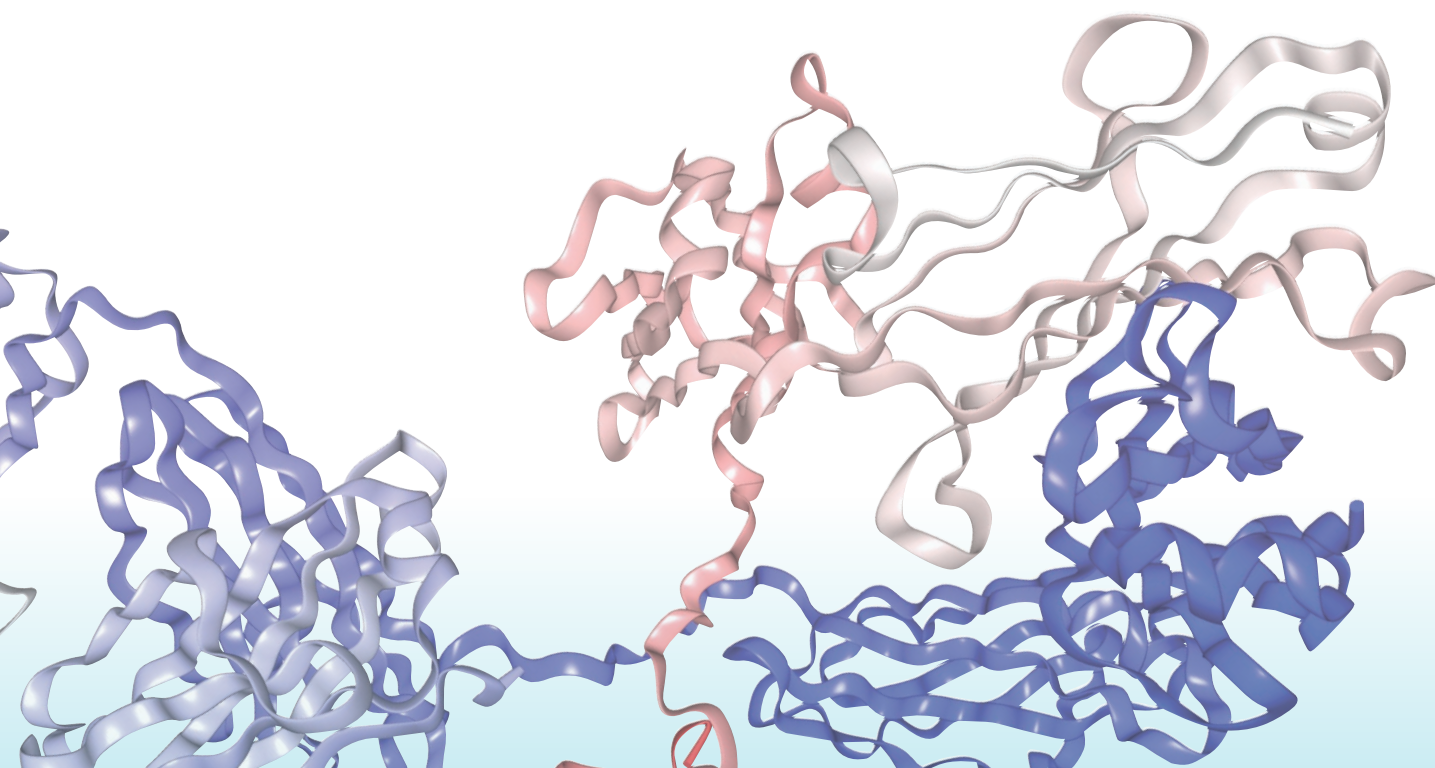
\*Clarke, N. J., et al.; *J. Inv. Med.* **2012**, *60*, 1157-1163

## Ordering Information

Description	Part Number
SMART Digest kit	<b>60109-101</b>
SMART Digest kit with 96 well filter plate	<b>60109-102</b>
SMART Digest kit with SOLA $\mu$ HRP SPE plate	<b>60109-103</b>

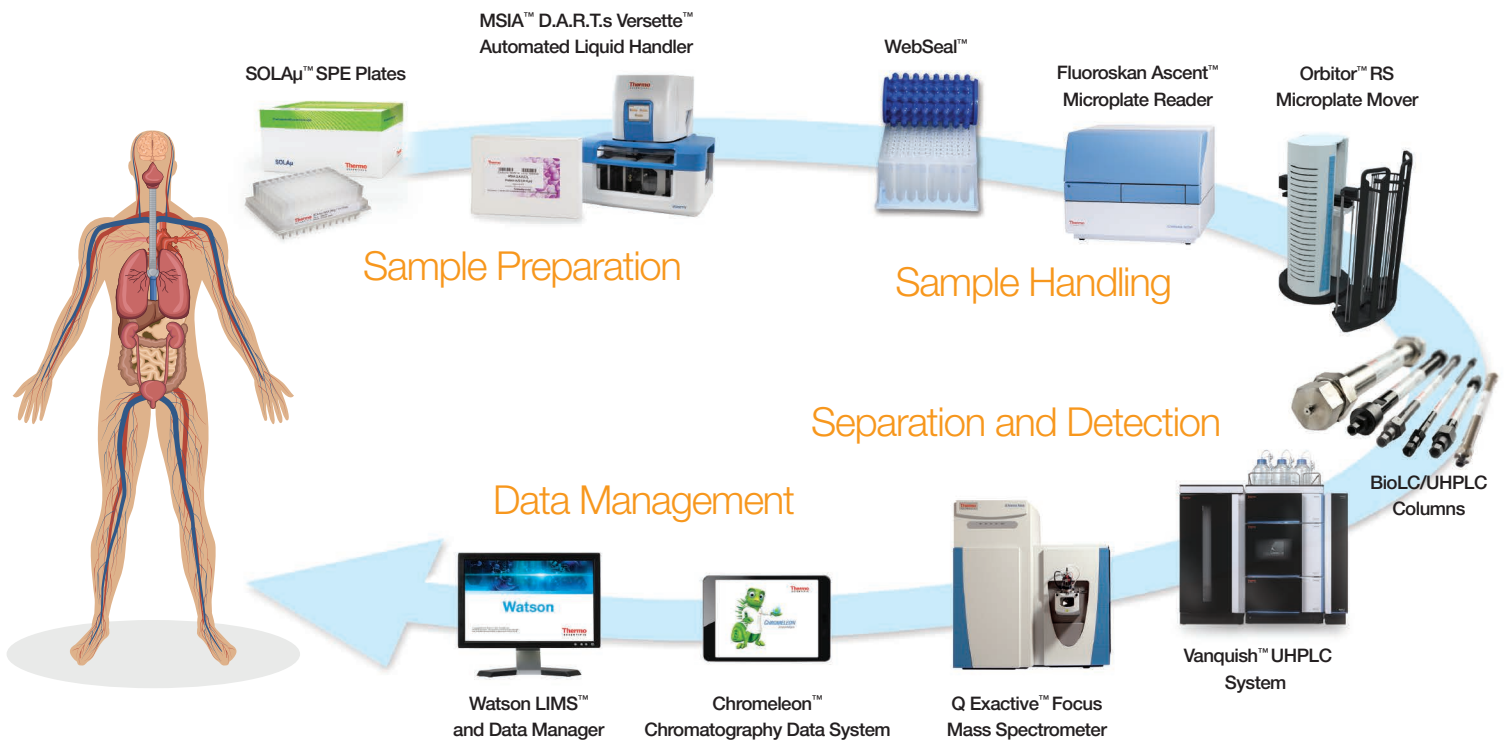
## Complementary Products

Description	Part Number
Thermo Scientific™ 96 well vacuum manifold	<b>60103-351</b>
Thermo Scientific™ vacuum pump (NA)	<b>60104-243</b>
Thermo Scientific™ vacuum pump (EU)	<b>60104-241</b>
SOLA $\mu$ HRP SPE plate	<b>60209-001</b>



# Characterize the full diversity of biomolecules

## Thermo Scientific™ Workflow Solutions for Biomolecule Separations



[thermoscientific.com/SMARTdigest](http://thermoscientific.com/SMARTdigest)

© 2015 Thermo Fisher Scientific Inc. All rights reserved. All trademarks are the property of Thermo Fisher Scientific and its subsidiaries. Specifications, terms and pricing are subject to change. Not all products are available in all countries. Please consult your local sales representative for details.

**USA and Canada** +1 800 332 3331  
**Australia** 1300 735 292 (free call domestic)  
**China** 800 810 5118 (free call domestic)  
 400 650 5118  
**France** +33 (0)1 60 92 48 34  
**Germany** +49 (0) 2423 9431 20 or 21  
**India** +91 22 6742 9494  
 +91 27 1766 2352

**Japan** 0120 753 670 (free call domestic)  
 0120 753 671 (fax)  
**Korea** +82 2 3420 8600  
**United Kingdom** +44 (0) 1928 534 110  
**New Zealand** 0800 933 966 (free call domestic)  
**Singapore** +65 6289 1190  
**All Other Enquiries** +44 (0) 1928 534 050

**Technical Support**  
 For advice and support, please visit our website:  
[www.thermoscientific.com/chromexpert](http://www.thermoscientific.com/chromexpert)

**Thermo**  
 SCIENTIFIC  
 A Thermo Fisher Scientific Brand