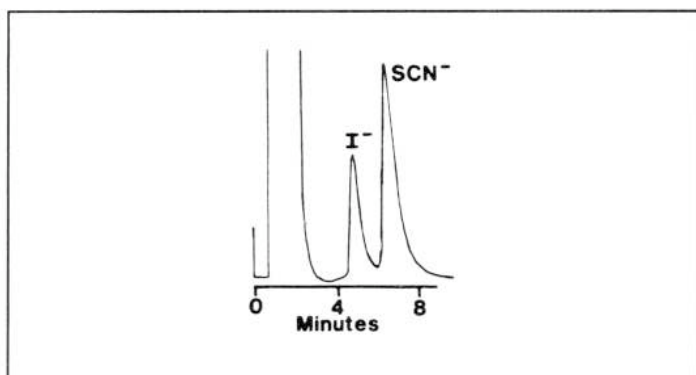


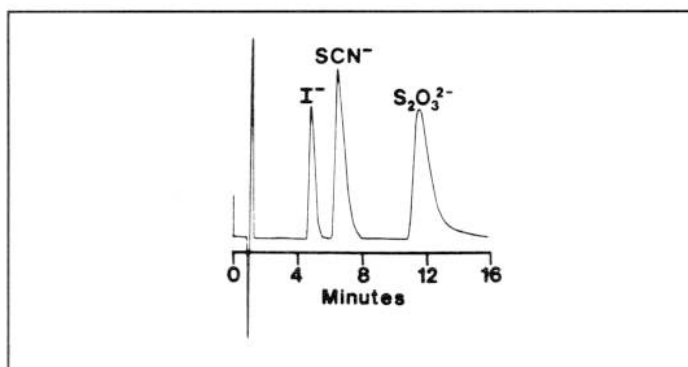


IonPac[®] AS5

The IonPac AS5 column provides rapid elution of strongly retained ions such as I⁻, thiocyanate, thiosulfate and chromate using dilute carbonateparacyanophenol eluents. The ability to use weak eluents simplifies the determination of strongly retained species since these eluents are compatible with the Suppressor. Furthermore, the rapid elution of these strongly retained species greatly improves peak shapes, lowers minimum detection limits and increases sample throughput potential. The selectivity of the IonPac AS5 makes it possible to rapidly elute strongly retained species such as I⁻ and thiocyanate in brines without interference from the large Cl⁻ peak typical of such samples.

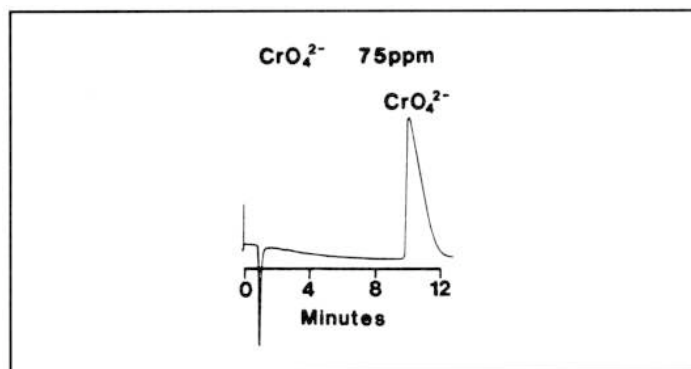


I⁻ and SCN⁻ in 7% Brine

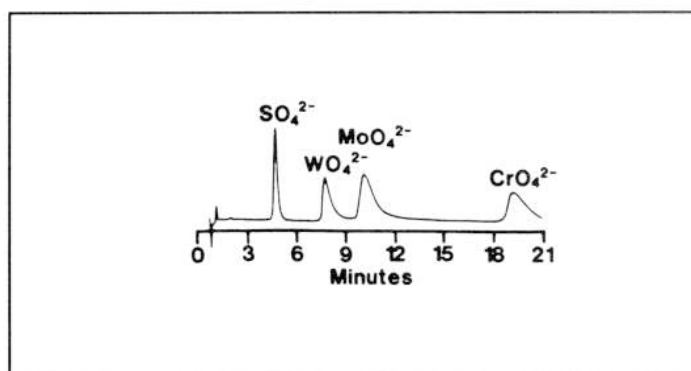


I⁻, SCN⁻ and S₂O₃²⁻

Product Information



Chromate



Analysis of Oxy-Metal Anions

ORDERING INFORMATION

IonPac AS5 Analytical
P/N 35395
IonPac CG5 Guard
P/N 35396

Now sold under the
Thermo Scientific brand

Thermo
SCIENTIFIC